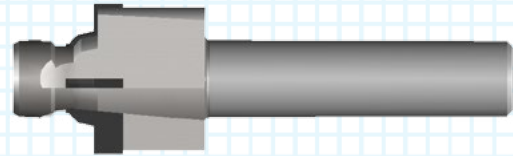
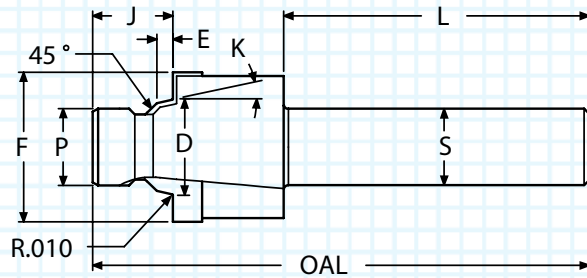


MS16142 (SAEJ1926-1) (SAEJ514) O-RING BOSS SOLID PILOT - CARBIDE TIPPED



- Ideal for non-standard minor diameter lengths
- Often called ORB (followed by port size number)
- Meets the requirements of SAEJ1926-1
- Polished flute face for optimum performance
- ALTiN+ coating for improved surface finish
- Meets the requirements of SAEJ514

K	D	E	F	P	J	L	S	OAL	FLUTES	TUBE	THREAD	SAE#	ORDER #	
													UNCOATED	ALTiN+
12°	0.3605	0.082	0.682	0.270	0.365	2.00	0.500	3.00	3	0.125	0.3125-24 UNF-2B	SAE#2	MS16142-2S	MS16142-2SA
12°	0.4235	0.082	0.760	0.331	0.415	2.00	0.500	3.00	3	0.188	0.3750-24 UNF-2B	SAE#3	MS16142-3S	MS16142-3SA
12°	0.4895	0.101	0.838	0.385	0.445	2.00	0.500	3.12	3	0.250	0.4375-20 UNF-2B	SAE#4	MS16142-4S	MS16142-4SA
12°	0.5525	0.101	0.916	0.448	0.465	2.00	0.500	3.12	4	0.312	0.5000-20 UNF-2B	SAE#5	MS16142-5S	MS16142-5SA
12°	0.6185	0.105	0.979	0.504	0.495	2.00	0.500	3.25	4	0.375	0.5625-18 UNF-2B	SAE#6	MS16142-6S	MS16142-6SA
15°	0.8135	0.108	1.198	0.685	0.560	2.12	0.750	3.57	4	0.500	0.7500-16 UNF-2B	SAE#8	MS16142-8S	MS16142-8SA
15°	0.9445	0.108	1.354	0.801	0.610	2.12	0.750	3.66	4	0.625	0.8750-14 UNF-2B	SAE#10	MS16142-10S	MS16142-10SA
15°	1.1505	0.138	1.635	0.975	0.640	2.12	0.750	3.75	4	0.750	1.0625-12 UN-2B	SAE#12	MS16142-12S	MS16142-12SA
15°	1.2755	0.138	1.775	1.101	0.710	2.25	1.000	4.00	4	0.875	1.1875-12 UN-2B	SAE#14	MS16142-14S	MS16142-14SA
15°	1.4005	0.138	1.920	1.225	0.710	2.25	1.000	4.05	4	1.000	1.3125-12 UN-2B	SAE#16	MS16142-16S	MS16142-16SA
15°	1.7155	0.140	2.280	1.537	0.750	2.25	1.000	4.20	4	1.250	1.6250-12 UN-2B	SAE#20	MS16142-20S	MS16142-20SA
15°	1.9645	0.140	2.570	1.787	0.750	2.25	1.000	4.20	4	1.500	1.8750-12 UN-2B	SAE#24	MS16142-24S	MS16142-24SA
15°	2.5895	0.140	3.490	2.412	0.800	2.50	1.250	4.60	4	2.000	2.5000-12 UN-2B	SAE#32	MS16142-32S	MS16142-32SA

Thread mills available. See pages 9-19.

