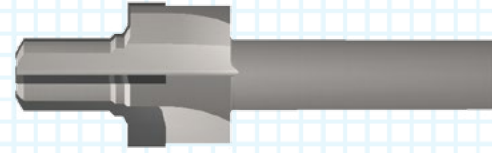
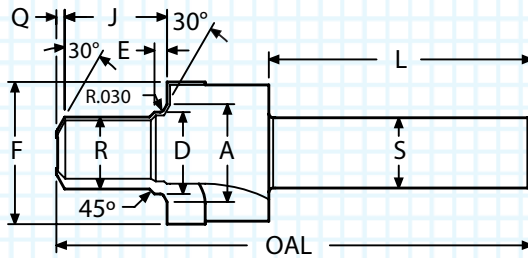


MS33649 (AS5202) - REAMER PILOT PORT TOOL CARBIDE TIPPED

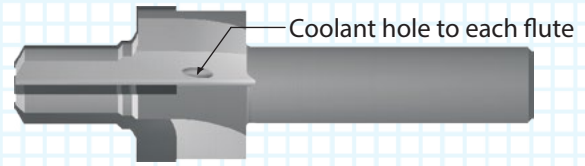
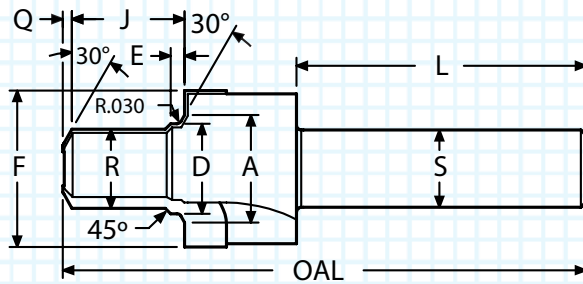


- Reams minor-thread diameter to size
- Precision ground for maximum concentricity
- ALTiN+ coated tool for higher cutting speed
- This port requires a UNJ thread which specifies a larger minor-thread diameter

A	D	E	F	J	Q	R	L	S	OAL	FLUTES	TUBE	THREAD	ORDER #	
													UNCOATED	ALTiN+
0.367	0.2665	0.071	0.575	0.425	0.025	0.219	2.00	0.500	3.00	3	N/A	0.2500-28 UNJF-3B	Solid Carbide	
													MS33649-1R	MS33649-1RA
0.446	0.3305	0.071	0.742	0.597	0.032	0.276	1.75	0.500	3.00	3	0.125	0.3125-24 UNJF-3B	Carbide Tipped	
													MS33649-2R	MS33649-2RA
0.508	0.3925	0.071	0.805	0.603	0.040	0.339	1.75	0.500	3.00	3	0.188	0.3750-24 UNJF-3B	MS33649-3R	MS33649-3RA
													MS33649-4R	MS33649-4RA
0.570	0.4565	0.083	0.888	0.676	0.040	0.393	1.88	0.500	3.12	4	0.250	0.4375-20 UNJF-3B	MS33649-5R	MS33649-5RA
													MS33649-6R	MS33649-6RA
0.633	0.5195	0.083	0.950	0.676	0.045	0.455	1.88	0.500	3.12	4	0.312	0.5000-20 UNJF-3B	MS33649-7R	MS33649-7RA
													MS33649-8R	MS33649-8RA
0.696	0.5825	0.091	1.012	0.729	0.060	0.513	1.88	0.500	3.38	4	0.375	0.5625-18 UNJF-3B	MS33649-9R	MS33649-9RA
													MS33649-10R	MS33649-10RA
0.758	0.6455	0.102	1.105	0.745	0.060	0.575	1.88	0.500	3.38	4	0.438	0.6250-18 UNJF-3B	MS33649-11R	MS33649-11RA
													MS33649-12R	MS33649-12RA
0.883	0.7715	0.102	1.240	0.854	0.070	0.693	2.12	0.750	3.84	4	0.500	0.7500-16 UNJF-3B	MS33649-14R	MS33649-14RA
													MS33649-16R	MS33649-16RA
0.946	0.8345	0.115	1.300	0.870	0.070	0.758	2.12	0.750	3.84	4	0.562	0.8125-16 UNJ-3B	MS33649-18R	MS33649-18RA
													MS33649-20R	MS33649-20RA
1.008	0.8985	0.115	1.415	0.950	0.080	0.810	2.12	0.750	3.94	4	0.625	0.8750-14 UNJF-3B	MS33649-24R	MS33649-24RA
													MS33649-28R	MS33649-28RA
1.164	1.0255	0.133	1.500	1.084	0.080	0.925	2.12	0.750	4.12	4	0.688	1.0000-12 UNJF-3B	MS33649-32R	MS33649-32RA
													MS33649-32R	MS33649-32RA
1.242	1.0885	0.133	1.665	1.084	0.080	0.985	2.12	0.750	4.12	4	0.750	1.0625-12 UNJ-3B	MS33649-32R	MS33649-32RA
													MS33649-32R	MS33649-32RA
1.370	1.2135	0.133	1.790	1.084	0.090	1.112	2.25	1.000	4.37	4	0.875	1.1875-12 UNJ-3B	MS33649-32R	MS33649-32RA
													MS33649-32R	MS33649-32RA
1.495	1.3385	0.133	1.965	1.084	0.090	1.235	2.25	1.000	4.37	4	1.000	1.3125-12 UNJ-3B	MS33649-32R	MS33649-32RA
													MS33649-32R	MS33649-32RA
1.683	1.5265	0.133	2.090	1.136	0.090	1.425	2.25	1.000	4.53	4	1.125	1.5000-12 UNJF-3B	MS33649-32R	MS33649-32RA
													MS33649-32R	MS33649-32RA
1.808	1.6505	0.133	2.310	1.136	0.090	1.549	2.25	1.000	4.54	4	1.250	1.6250-12 UNJ-3B	MS33649-32R	MS33649-32RA
													MS33649-32R	MS33649-32RA
2.058	1.9005	0.133	2.628	1.147	0.095	1.799	2.25	1.000	4.54	4	1.500	1.8750-12 UNJ-3B	MS33649-32R	MS33649-32RA
													MS33649-32R	MS33649-32RA
2.433	2.2755	0.133	3.050	1.263	0.095	2.174	2.50	1.250	4.92	4	1.750	2.2500-12 UNJ-3B	MS33649-32R	MS33649-32RA
													MS33649-32R	MS33649-32RA
2.683	2.5265	0.133	3.520	1.388	0.095	2.424	2.50	1.250	5.15	4	2.000	2.5000-12 UNJ-3B	MS33649-32R	MS33649-32RA
													MS33649-32R	MS33649-32RA

Thread mills available. See pages 9-19.

MS33649 (AS5202) - REAMER PILOT PORT TOOL COOLANT THROUGH - CARBIDE TIPPED



- Reams minor-thread diameter to size
- Precision ground for maximum concentricity
- ALTiN+ coated tool for higher cutting speed
- This port requires a UNJ thread which specifies a larger minor-thread diameter

A	D	E	F	J	Q	R	L	S	OAL	FLUTES	TUBE	THREAD	ORDER #	
													UNCOATED	ALTiN+
0.446	0.3305	0.071	0.742	0.597	0.032	0.276	1.75	0.500	3.00	3	0.125	0.3125-24 UNJF-3B	MS33649-2R-X3	MS33649-2R-X3A
0.508	0.3925	0.071	0.805	0.603	0.040	0.339	1.75	0.500	3.00	3	0.188	0.3750-24 UNJF-3B	MS33649-3R-X3	MS33649-3R-X3A
0.570	0.4565	0.083	0.888	0.676	0.040	0.393	1.88	0.500	3.12	3	0.250	0.4375-20 UNJF-3B	MS33649-4R-X3	MS33649-4R-X3A
0.633	0.5195	0.083	0.950	0.676	0.045	0.455	1.88	0.500	3.12	3	0.312	0.5000-20 UNJF-3B	MS33649-5R-X3	MS33649-5R-X3A
0.696	0.5825	0.091	1.012	0.729	0.060	0.513	1.88	0.500	3.38	3	0.375	0.5625-18 UNJF-3B	MS33649-6R-X3	MS33649-6R-X3A
0.883	0.7715	0.102	1.240	0.854	0.070	0.693	2.12	0.750	3.84	5	0.500	0.7500-16 UNJF-3B	MS33649-8R-X5	MS33649-8R-X5A
1.008	0.8985	0.115	1.415	0.950	0.080	0.810	2.12	0.750	3.94	5	0.625	0.8750-14 UNJF-3B	MS33649-10R-X5	MS33649-10R-X5A
1.242	1.0885	0.133	1.665	1.084	0.080	0.985	2.12	0.750	4.12	5	0.750	1.0625-12 UNJ-3B	MS33649-12R-X5	MS33649-12R-X5A
1.370	1.2135	0.133	1.790	1.084	0.090	1.112	2.25	1.000	4.37	5	0.875	1.1875-12 UNJ-3B	MS33649-14R-X5	MS33649-14R-X5A
1.495	1.3385	0.133	1.965	1.084	0.090	1.235	2.25	1.000	4.37	5	1.000	1.3125-12 UNJ-3B	MS33649-16R-X5	MS33649-16R-X5A

Thread mills available. See pages 9-19.

PORT AND CAVITY TOOL TECHNICAL INFORMATION

MATERIAL	HB/Rc	SPEED (SFM)		CUTTING CONDITIONS	
		UNCOATED	ALTiN+	INFEED PER FLUTE REAM	INFEED PER FLUTE SPOT FACE
CAST IRON	130 HB	75-210	200-450	.001-.0025	.0008-.0020
CARBON STEEL	18 Rc	125-190	190-400	.001-.0030	.001-.0020
ALLOY STEEL	20 Rc	70-135	130-350	.001-.0030	.0008-.0020
TOOL STEEL	25 Rc	75-100	100-220	.001-.0025	.0005-.0020
300 STAINLESS STEEL	150 HB	90-100	100-230	.001-.0020	.0007-.0015
400 STAINLESS STEEL	195 HB	90-135	135-300	.001-.0020	.0005-.0015
HIGH TEMP ALLOY (NICKEL & COBALT BASE)	20 Rc	30-125	100-150	.0008-.0015	.0005-.0010
TITANIUM	25 Rc	50-100	100-140	.001-.0020	.0005-.0010
HEAT TREATED ALLOYS (38-45Rc)	40 Rc	50-75	75-130	.0008-.0015	.0005-.0010
ALUMINUM	100 HB	850-1000	800-1500	.002-.0040	.0010-.0030
BRASS, ZINC	80 HB	750-950	800-1200	.002-.0040	.0010-.0030

SFM = Surface Feet per Minute Starting parameters only. Setup and machine rigidity may affect performance.
 RPM = SFM x 3.82 divided by tool diameter

PROBLEM	CAUSE	SOLUTION
RAPID FLANK WEAR	CUTTING CONDITIONS	Check for excessive speed and feed - see chart.
	TOOL	Select a coated tool.
	PROGRAM	Remove dwell from program at end of cut.
BUILT-UP EDGE	TOOL	Select a coated tool. The coating will resist built-up edges.
	HEAT	Use coolant through port tool. If coolant is not available, use shop air and a coated tool.
SURFACE TORN	TOOL	Use a coated tool. On most carbon steels, an uncoated tool will not produce an acceptable finish.
CHATTER	TOOL	Hone cutting edge of spot face. Use Coated Tool. Increase chip load.
LIGHT CHATTER	PROGRAM	Increase speed by 15-20%. A faster speed reduces forces. A dwell typically will not remove chatter.
POOR TOOL LIFE	AMOUNT OF STOCK	Rough port to 0.97 inch of finish size.
	PART	Make sure prior operation did not work harden the material.

SAMPLE PROGRAM FOR MAXIMUM PRODUCTIVITY

N51 (Sample Port Tool Program: MS33649-4RA (ALTiN+) cutting Carbon Steel)

T51 M06

Select Tool

S2916 M03

SFM = 300 ; RPM = 300 x 3.82 / Reamer Diameter

G00 G90 G54 X0. Y0.

RPM = 300 X 3.82 / 0.393

G43 H51 Z0.1 M08

RPM = 2916

G01 Z-0.6 F23.3

Feed Rate = RPM x 0.002 x 4 (Number of Flutes)

S1290 M03

RPM = 300 x 3.82 / 0.888 (Spot Face Diameter)

G04 P1.

Dwell to slow down spindle

G01 Z-.73 F10.3

Feed rate = RPM x 0.002 x 4 (Number of Flutes)

G00 Z5. M09