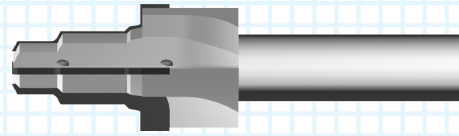
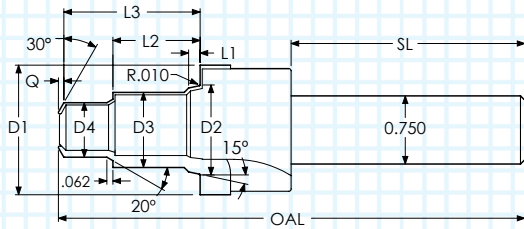


PARKER COMMON CAVITY TOOLS

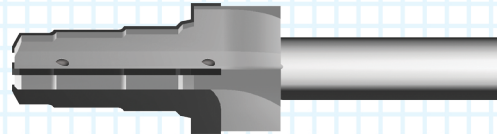
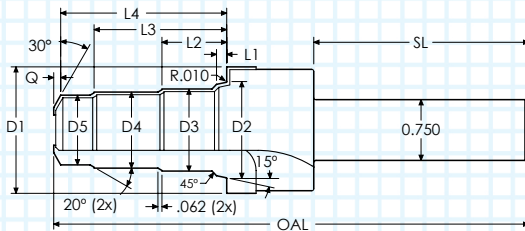
ROUGHER - CARBIDE TIPPED



Coolant Hole(s) Each Flute

TWO WAY CAVITY

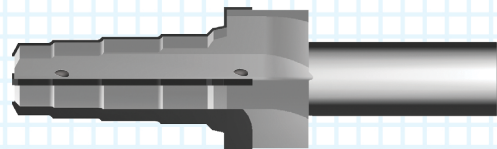
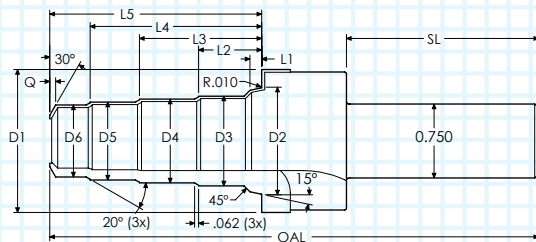
D1	D2	D3	D4	L1	L2	L3	Q	OAL	SL	ORDER #		EDP #	
										UNCOATED	ALTiN+	UNCOATED	ALTiN+
1.163	0.789	0.663	0.476	0.108	0.750	1.156	0.050	4.00	2.00	C08-2-ROUGH-X6	C08-2-ROUGH-X6A	400206	400245
1.319	0.920	0.787	0.601	0.108	0.965	1.332	0.060	4.00	2.00	C10-2-ROUGH-X6	C10-2-ROUGH-X6A	400224	400263
1.600	1.126	0.951	0.851	0.138	1.182	1.678	0.075	5.25	2.25	C12-2-ROUGH-X8	C12-2-ROUGH-X8A	400220	400256
1.885	1.376	1.209	1.102	0.138	1.344	1.864	0.075	5.50	2.25	C16-2-ROUGH-X8	C16-2-ROUGH-X8A	400229	400265



Coolant Hole(s) Each Flute

THREE WAY CAVITY

D1	D2	D3	D4	D5	L1	L2	L3	L4	Q	OAL	SL	ORDER #		EDP #	
												UNCOATED	ALTiN+	UNCOATED	ALTiN+
1.163	0.789	0.663	0.601	0.538	0.108	0.680	1.240	1.750	0.060	5.00	2.12	C08-3-ROUGH-X6	C08-3-ROUGH-X6A	400212	400251
1.319	0.920	0.787	0.664	0.601	0.108	0.850	1.500	1.895	0.050	5.00	2.12	C10-3-ROUGH-X6	C10-3-ROUGH-X6A	400230	400269
1.600	1.126	0.950	0.913	0.851	0.138	1.062	1.908	2.346	0.070	5.75	2.12	C12-3-ROUGH-X8	C12-3-ROUGH-X8A	400223	400259
1.885	1.376	1.209	1.102	1.039	0.138	1.344	2.469	2.988	0.065	6.25	2.12	C16-3-ROUGH-X8	C16-3-ROUGH-X8A	400232	400268



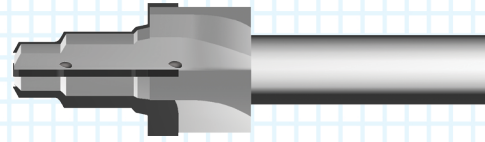
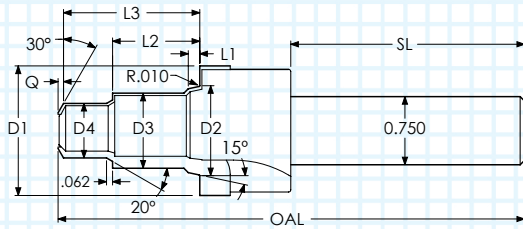
Coolant Hole(s) Each Flute

FOUR WAY CAVITY

D1	D2	D3	D4	D5	D6	L1	L2	L3	L4	L5	Q	OAL	SL	ORDER #		EDP #	
														UNCOATED	ALTiN+	UNCOATED	ALTiN+
1.163	0.789	0.663	0.601	0.538	0.476	0.108	0.680	1.240	1.797	2.150	0.050	5.50	2.12	C08-4-ROUGH-X6	C08-4-ROUGH-X6A	400218	400257
1.319	0.920	0.787	0.726	0.664	0.601	0.108	0.875	1.500	2.125	2.520	0.055	5.50	2.12	C10-4-ROUGH-X6	C10-4-ROUGH-X6A	400236	400200
1.600	1.126	0.950	0.913	0.851	0.789	0.138	1.062	1.908	2.758	3.196	0.070	7.00	2.25	C12-4-ROUGH-X8	C12-4-ROUGH-X8A	400226	400262
1.885	1.376	1.209	1.102	1.039	0.977	0.138	1.344	2.469	3.594	4.096	0.070	7.25	2.25	C16-4-ROUGH-X8	C16-4-ROUGH-X8A	400235	400271

PARKER COMMON CAVITY TOOLS

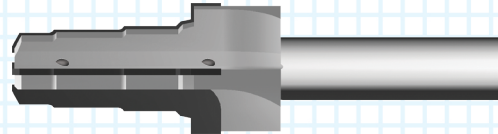
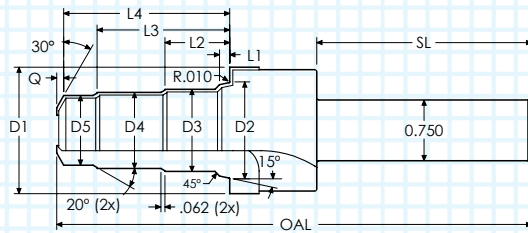
FINISHER - CARBIDE TIPPED



Coolant Hole(s) Each Flute

TWO WAY CAVITY

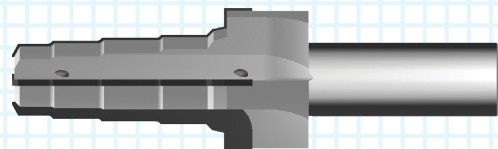
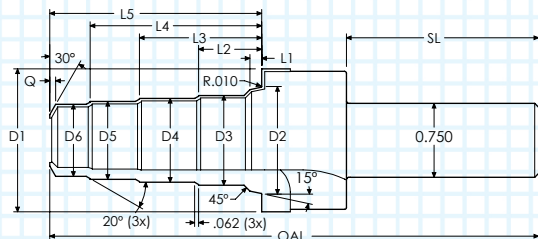
D1	D2	D3	D4	L1	L2	L3	Q	OAL	SL	ORDER #		EDP #	
										UNCOATED	ALTiN+	UNCOATED	ALTiN+
1.188	0.813	0.688	0.501	0.108	0.750	1.156	0.050	4.00	2.00	C08-2-FINISH-X6	C08-2-FINISH-X6A	400203	400242
1.344	0.945	0.812	0.626	0.108	0.965	1.332	0.060	4.00	2.00	C10-2-FINISH-X6	C10-2-FINISH-X6A	400221	400260
1.625	1.150	0.976	0.876	0.138	1.182	1.678	0.075	5.25	2.25	C12-2-FINISH-X8	C12-2-FINISH-X8A	400219	400255
1.910	1.401	1.234	1.127	0.138	1.344	1.864	0.075	5.50	2.25	C16-2-FINISH-X8	C16-2-FINISH-X8A	400228	400264



Coolant Hole(s) Each Flute

THREE WAY CAVITY

D1	D2	D3	D4	D5	L1	L2	L3	L4	Q	OAL	SL	ORDER #		EDP #	
												UNCOATED	ALTiN+	UNCOATED	ALTiN+
1.188	0.813	0.688	0.626	0.563	0.108	0.680	1.240	1.750	0.060	5.00	2.12	C08-3-FINISH-X6	C08-3-FINISH-X6A	400209	400248
1.344	0.945	0.812	0.689	0.626	0.108	0.850	1.500	1.895	0.050	5.00	2.12	C10-3-FINISH-X6	C10-3-FINISH-X6A	400227	400266
1.625	1.150	0.975	0.938	0.876	0.138	1.062	1.908	2.346	0.070	5.75	2.12	C12-3-FINISH-X8	C12-3-FINISH-X8A	400222	400258
1.910	1.401	1.234	1.127	1.064	0.138	1.344	2.469	2.988	0.065	6.25	2.12	C16-3-FINISH-X8	C16-3-FINISH-X8A	400231	400267



Coolant Hole(s) Each Flute

FOUR WAY CAVITY

D1	D2	D3	D4	D5	D6	L1	L2	L3	L4	L5	Q	OAL	SL	ORDER #		EDP #	
														UNCOATED	ALTiN+	UNCOATED	ALTiN+
1.188	0.813	0.688	0.626	0.563	0.501	.108	0.680	1.240	1.797	2.150	.050	5.50	2.12	C08-4-FINISH-X6	C08-4-FINISH-X6A	400215	400254
1.344	0.945	0.812	0.751	0.689	0.626	.108	0.875	1.500	2.125	2.520	.055	5.50	2.12	C10-4-FINISH-X6	C10-4-FINISH-X6A	400233	400239
1.625	1.150	0.975	0.938	0.876	0.814	.138	1.062	1.908	2.758	3.196	.070	7.00	2.25	C12-4-FINISH-X8	C12-4-FINISH-X8A	400225	400261
1.910	1.401	1.234	1.127	1.064	1.002	.138	1.344	2.469	3.594	4.096	.070	7.25	2.25	C16-4-FINISH-X8	C16-4-FINISH-X8A	400234	400270

THREAD MILLS

SINGLE POINT

INDEXABLE TOOLS

Cavity Tools

SPECIALTY