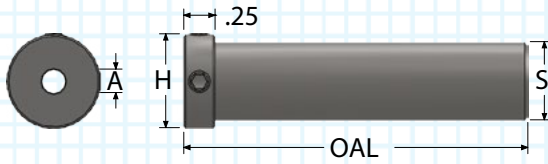


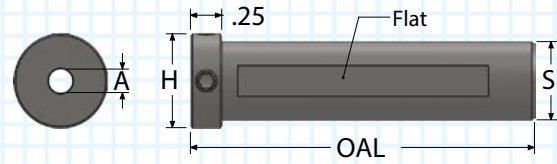
# SINGLE POINT HOLDERS

- Made with heat-treated steel
- Features two lock-down screws
- Holders available with or without flat



**DH HOLDERS  
WITHOUT FLAT**

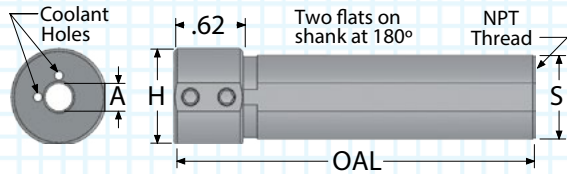
"A" INSIDE DIA.	"S" SHANK DIA.	"H" HEAD DIA.	OAL	ORDER #
0.1250	0.375	0.500	2.00	DH37-1/8
0.1562	0.375	0.500	2.00	DH37-5/32
0.1875	0.375	0.500	2.00	DH37-3/16
0.2187	0.375	0.500	2.00	DH37-7/32
0.2500	0.375	0.500	2.00	DH37-1/4
0.1250	0.500	0.625	2.75	DH50-1/8
0.1562	0.500	0.625	2.75	DH50-5/32
0.1875	0.500	0.625	2.75	DH50-3/16
0.2187	0.500	0.625	2.75	DH50-7/32
0.2500	0.500	0.625	2.75	DH50-1/4
0.3125	0.500	0.625	2.75	DH50-5/16
0.3750	0.500	0.625	2.75	DH50-3/8
0.1250	0.625	0.750	2.75	DH62-1/8
0.1562	0.625	0.750	2.75	DH62-5/32
0.1875	0.625	0.750	2.75	DH62-3/16
0.2187	0.625	0.750	2.75	DH62-7/32
0.2500	0.625	0.750	2.75	DH62-1/4
0.3125	0.625	0.750	2.75	DH62-5/16
0.3750	0.625	0.750	2.75	DH62-3/8
0.1250	0.750	0.875	2.75	DH75-1/8
0.1875	0.750	0.875	2.75	DH75-3/16
0.2500	0.750	0.875	2.75	DH75-1/4
0.3125	0.750	0.875	2.75	DH75-5/16
0.3750	0.750	0.875	2.75	DH75-3/8
0.5000	0.750	0.875	2.75	DH75-1/2



**DHF HOLDERS  
WITH FLAT**

"A" INSIDE DIA.	"S" SHANK DIA.	"H" HEAD DIA.	OAL	ORDER #
0.1250	0.375	0.500	2.00	DHF37-1/8
0.1562	0.375	0.500	2.00	DHF37-5/32
0.1875	0.375	0.500	2.00	DHF37-3/16
0.2187	0.375	0.500	2.00	DHF37-7/32
0.2500	0.375	0.500	2.00	DHF37-1/4
0.1250	0.500	0.625	2.75	DHF50-1/8
0.1562	0.500	0.625	2.75	DHF50-5/32
0.1875	0.500	0.625	2.75	DHF50-3/16
0.2187	0.500	0.625	2.75	DHF50-7/32
0.2500	0.500	0.625	2.75	DHF50-1/4
0.3125	0.500	0.625	2.75	DHF50-5/16
0.3750	0.500	0.625	2.75	DHF50-3/8
0.1250	0.625	0.750	2.75	DHF62-1/8
0.1562	0.625	0.750	2.75	DHF62-5/32
0.1875	0.625	0.750	2.75	DHF62-3/16
0.2187	0.625	0.750	2.75	DHF62-7/32
0.2500	0.625	0.750	2.75	DHF62-1/4
0.3125	0.625	0.750	2.75	DHF62-5/16
0.3750	0.625	0.750	2.75	DHF62-3/8
0.1250	0.750	0.875	2.75	DHF75-1/8
0.1875	0.750	0.875	2.75	DHF75-3/16
0.2500	0.750	0.875	2.75	DHF75-1/4
0.3125	0.750	0.875	2.75	DHF75-5/16
0.3750	0.750	0.875	2.75	DHF75-3/8
0.5000	0.750	0.875	2.75	DHF75-1/2

# SINGLE POINT COOLANT HOLDERS



- Made with heat-treated steel
- Four lock-down screws for maximum rigidity
- Engineered for maximum coolant flow

## QHC HOLDERS (INCH)

"A" INSIDE DIA.	"S" SHANK DIA.	"H" HEAD DIA.	NPT THREAD	OAL	ORDER #
0.1250	0.375	0.500	1/16-27NPT	2.50	QHC37-1/8
0.1562	0.375	0.500	1/16-27NPT	2.50	QHC37-5/32
0.1875	0.375	0.500	1/16-27NPT	2.50	QHC37-3/16
0.1250	0.500	0.625	1/8-27NPT	2.75	QHC50-1/8
0.1875	0.500	0.625	1/8-27NPT	2.75	QHC50-3/16
0.2500	0.500	0.625	1/8-27NPT	2.75	QHC50-1/4
0.1250	0.625	0.750	1/4-18NPT	3.25	QHC62-1/8
0.1562	0.625	0.750	1/4-18NPT	3.25	QHC62-5/32
0.1875	0.625	0.750	1/4-18NPT	3.25	QHC62-3/16
0.2187	0.625	0.750	1/4-18NPT	3.25	QHC62-7/32
0.2500	0.625	0.750	1/4-18NPT	3.25	QHC62-1/4

## QHC HOLDERS (INCH)

"A" INSIDE DIA.	"S" SHANK DIA.	"H" HEAD DIA.	NPT THREAD	OAL	ORDER #
0.1250	0.750	0.865	3/8-18NPT	3.25	QHC75-1/8
0.1562	0.750	0.865	3/8-18NPT	3.25	QHC75-5/32
0.1875	0.750	0.865	3/8-18NPT	3.25	QHC75-3/16
0.2187	0.750	0.865	3/8-18NPT	3.25	QHC75-7/32
0.2500	0.750	0.865	3/8-18NPT	3.25	QHC75-1/4
0.3125	0.750	0.865	3/8-18NPT	3.25	QHC75-5/16
0.3750	0.750	0.865	3/8-18NPT	3.25	QHC75-3/8
0.1250	1.000	1.115	1/2-14NPT	3.25	QHC10-1/8
0.1875	1.000	1.115	1/2-14NPT	3.25	QHC10-3/16
0.2500	1.000	1.115	1/2-14NPT	3.25	QHC10-1/4
0.3125	1.000	1.115	1/2-14NPT	3.25	QHC10-5/16
0.3750	1.000	1.115	1/2-14NPT	3.25	QHC10-3/8
0.5000	1.000	1.115	1/2-14NPT	3.25	QHC10-1/2

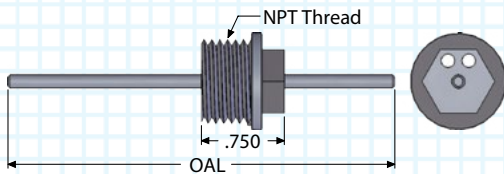
## QHC HOLDERS (METRIC)

"A" INSIDE DIA.	"S" SHANK DIA.	"H" HEAD DIA.	NPT THREAD	OAL	ORDER #
0.1250	20mm	0.865	3/8-18NPT	3.25	QHC20-1/8
0.1875	20mm	0.865	3/8-18NPT	3.25	QHC20-3/16
0.2500	20mm	0.865	3/8-18NPT	3.25	QHC20-1/4
0.3125	20mm	0.865	3/8-18NPT	3.25	QHC20-5/16
0.3750	20mm	0.865	3/8-18NPT	3.25	QHC20-3/8

## QHC HOLDERS (METRIC)

"A" INSIDE DIA.	"S" SHANK DIA.	"H" HEAD DIA.	NPT THREAD	OAL	ORDER #
0.1250	22mm	0.865	3/8-18NPT	3.25	QHC22-1/8
0.1875	22mm	0.865	3/8-18NPT	3.25	QHC22-3/16
0.2500	22mm	0.865	3/8-18NPT	3.25	QHC22-1/4
0.3125	22mm	0.865	3/8-18NPT	3.25	QHC22-5/16
0.3750	22mm	0.865	3/8-18NPT	3.25	QHC22-3/8

# BACK STOPS - FOR QHC SERIES



- Adjustable back stop for quick tool change
- Ideal for qualified threading tools (see pages 76-77 )
- Engineered for maximum coolant flow
- Accessory set comes with 6 screws and 1 key

## BACK STOP

NPT THREAD	STOP ROD DIAMETER	STOP ROD OAL	HOLDER SERIES	ORDER #
1/16-27NPT	0.093	2.75	QHC37	QHC37-BKS
1/8-27NPT	0.125	3.00	QHC50	QHC50-BKS
1/4-18NPT	0.125	3.00	QHC62	QHC62-BKS
3/8-18NPT	0.125	3.00	QHC75	QHC75-BKS
1/2-14NPT	0.125	3.50	QHC10	QHC10-BKS

## BACK STOP ACCESSORIES

6 SCREWS, 1 KEY	
BACKSTOP REFERENCE	ORDER #
QHC37-BKS	PKH-1/8
QHC50-BKS	
QHC62-BKS	PKH-3/16
QHC75-BKS	
QHC10-BKS	

# DH & QHC HOLDER ACCESSORIES



- Works as a replacement set or as spares
- Use the holder order number to locate the proper accessory set for size.

6 SCREWS, 1 KEY	
DH HOLDER REFERENCE	ORDER #
DH37-1/4 DH50-3/8	PKH-1/8
DH37-1/8 DH37-5/32 DH37-3/16 DH37-7/32 DH50-7/32 DH50-1/4 DH50-5/16 DH62-5/16 DH62-3/8 DH75-1/2	PKH-3/16
DH50-1/8 DH50-5/32 DH50-3/16 DH62-1/8 DH62-5/32 DH62-3/16 DH62-7/32 DH62-1/4 DH75-1/4 DH75-5/16 DH75-3/8	PKH-1/4
DH75-1/8 DH75-3/16	PKH-3/8

6 SCREWS, 1 KEY	
QHC HOLDER REFERENCE	ORDER #
QHC37-1/8 QHC37-5/32 QHC37-3/16 QHC50-3/16 QHC50-1/4	PKH-3/16
QHC50-1/8 QHC62-1/8 QHC62-5/32 QHC62-3/16 QHC62-7/32 QHC62-1/4 QHC75-3/16 QHC75-7/32 QHC75-1/4 QHC75-5/16 QHC75-3/8 QHC10-1/2	PKH-1/4
QHC75-1/8 QHC75-5/32 QHC10-1/4 QHC10-5/16 QHC10-3/8	PKH-3/8
QHC10-1/8 QHC10-3/16	PKH-1/2