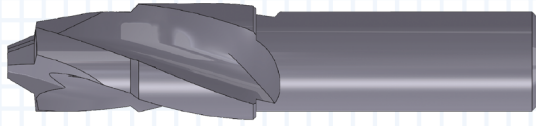
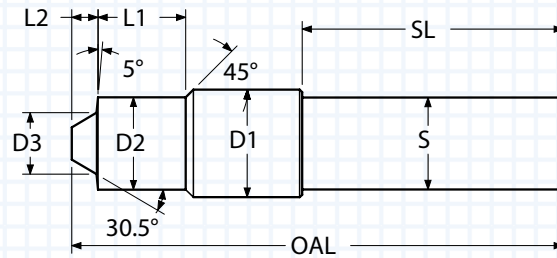


AUTOCLAVE PORT TOOLS - MEDIUM PRESSURE SOLID CARBIDE AND CARBIDE-TIPPED



- Designed to produce ports per Parker Autoclave Standard
- Precision ground for maximum concentricity
- Polished flute face for optimum performance
- AlTiN+ coating for improved tool life



D1	D2	D3	L1	L2	S	SL	OAL	FLUTES	FLUTE TYPE	TUBE	THREAD	CONNECTION TYPE	ORDER #	EDP #
													AlTiN+	AlTiN+
Solid Carbide														
0.500	0.390	0.188	0.471	0.101	0.500	2.13	3.50	3	Helical	1/4	7/16-20	SF250CX	PT-SF0250CX-A	405006
0.625	0.511	0.310	0.599	0.134	0.500	2.13	3.50	3	Helical	3/8	9/16-18	SF375CX	PT-SF0375CX-A	405008
0.875	0.752	0.500	0.715	0.213	0.750	2.13	4.00	3	Helical	9/16	13/16-16	SF562CX10 SF562CX20	PT-SF0562CX-A	405010
Carbide-Tipped														
1.090	0.966	0.625	0.899	0.216	0.750	2.25	4.50	3	Straight	3/4	3/4-14 NPS	SF750CX10 SF750CX20	PT-SF0750CX-A	405012
1.438	1.297	0.875	1.266	0.418	0.750	2.25	4.75	3	Straight	1	1-3/8-12	SF1000CX10 SF1000CX20	PT-SF1000CX-A	405014

THREAD MILLS

SINGLE POINT

INDEXABLE TOOLS

Port Tools

SPECIALTY